



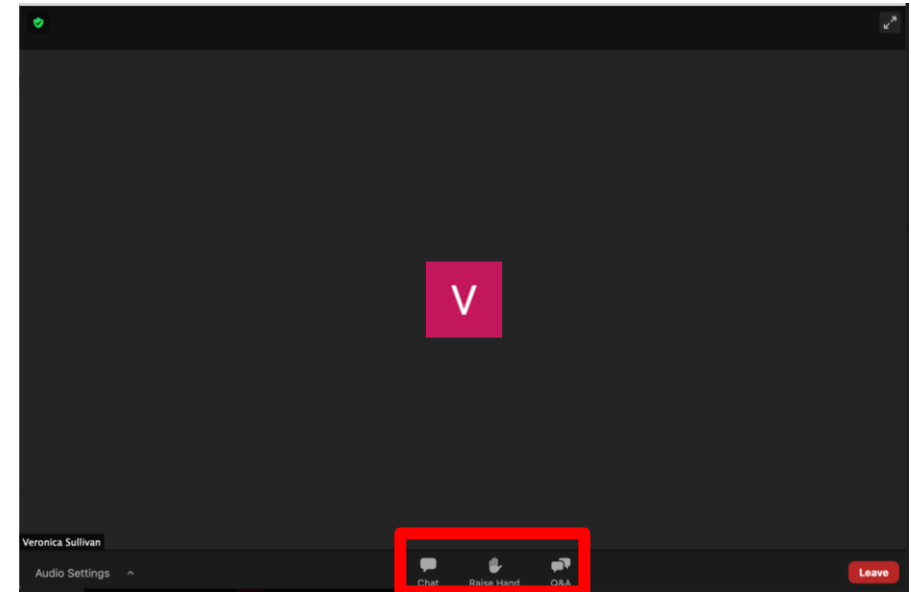
City of
Pasco

**Broadmoor Interchange Project –
Open House #1
November 17, 2021**



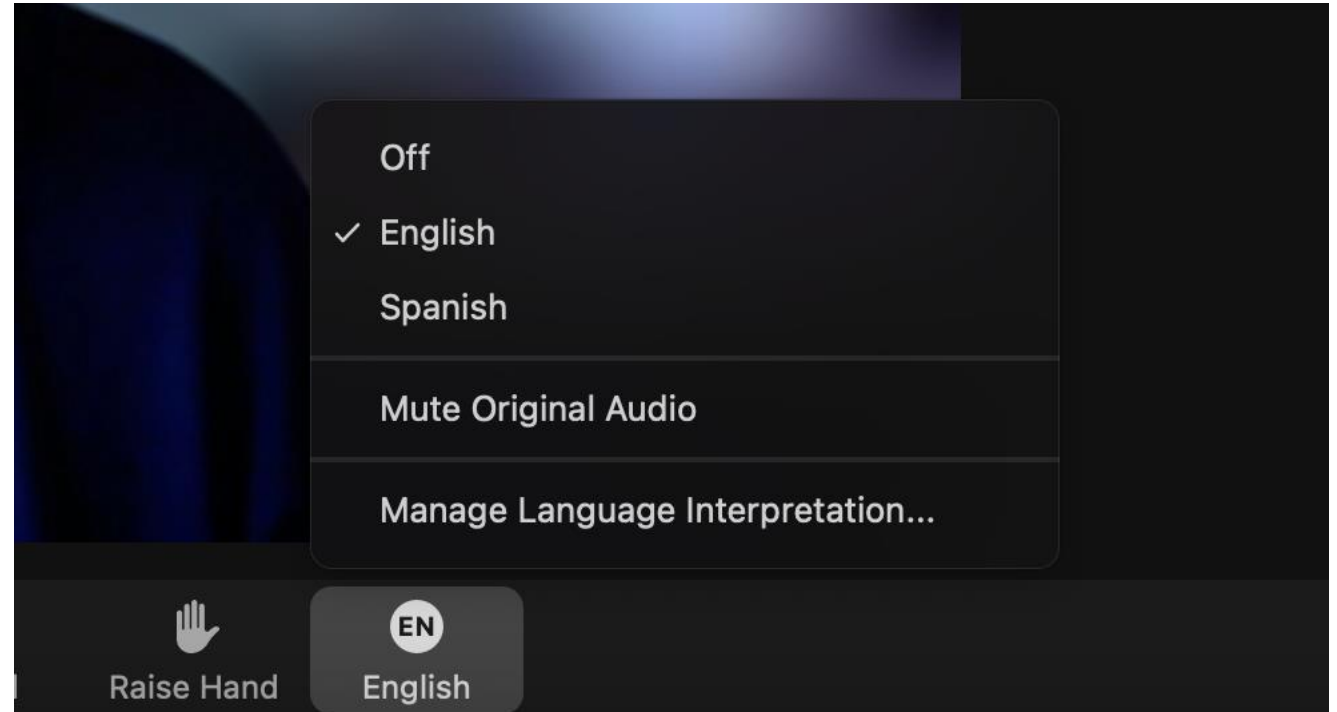
To Make a Public Comment

- Raise your virtual hand.
- Moderators will call on each person and unmute them.
- A three-minute limit per commentor will be enforced to capture as many comments as possible.
- If you speak Spanish, please **raise your hand now**
- Liz: Si solo habla español, **levante la mano**

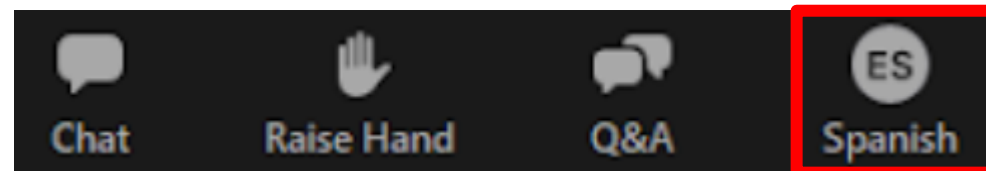


Spanish Room Instructions

Si desea participar en español, seleccione aquí el idioma español.



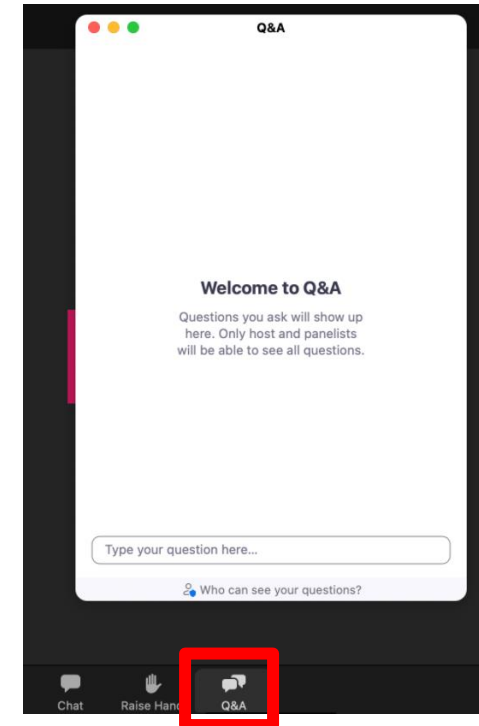
ôr





To Submit a Question via Q&A Box

- Click the questions window and enter your question.
- It will be seen and read by moderators.
- If there are duplicate questions they will be answered only once, but kept as part of the record.



City of Pasco

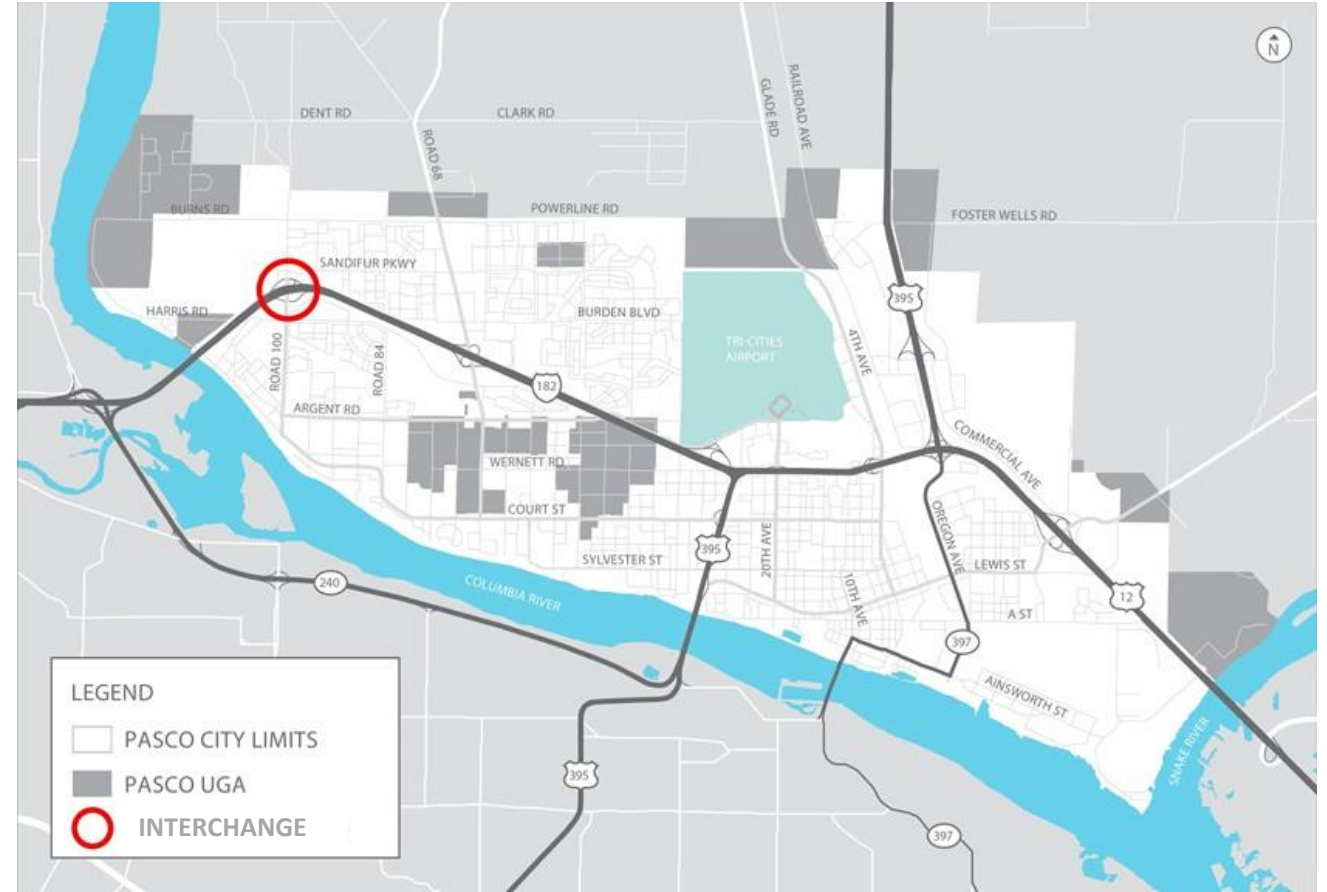


Tonight's Agenda

- Welcome and Introductions
- Presentation
 - Project Background
 - Broadmoor Interchange
 - Project Purpose & Need
 - Schedule
- Questions & Comments

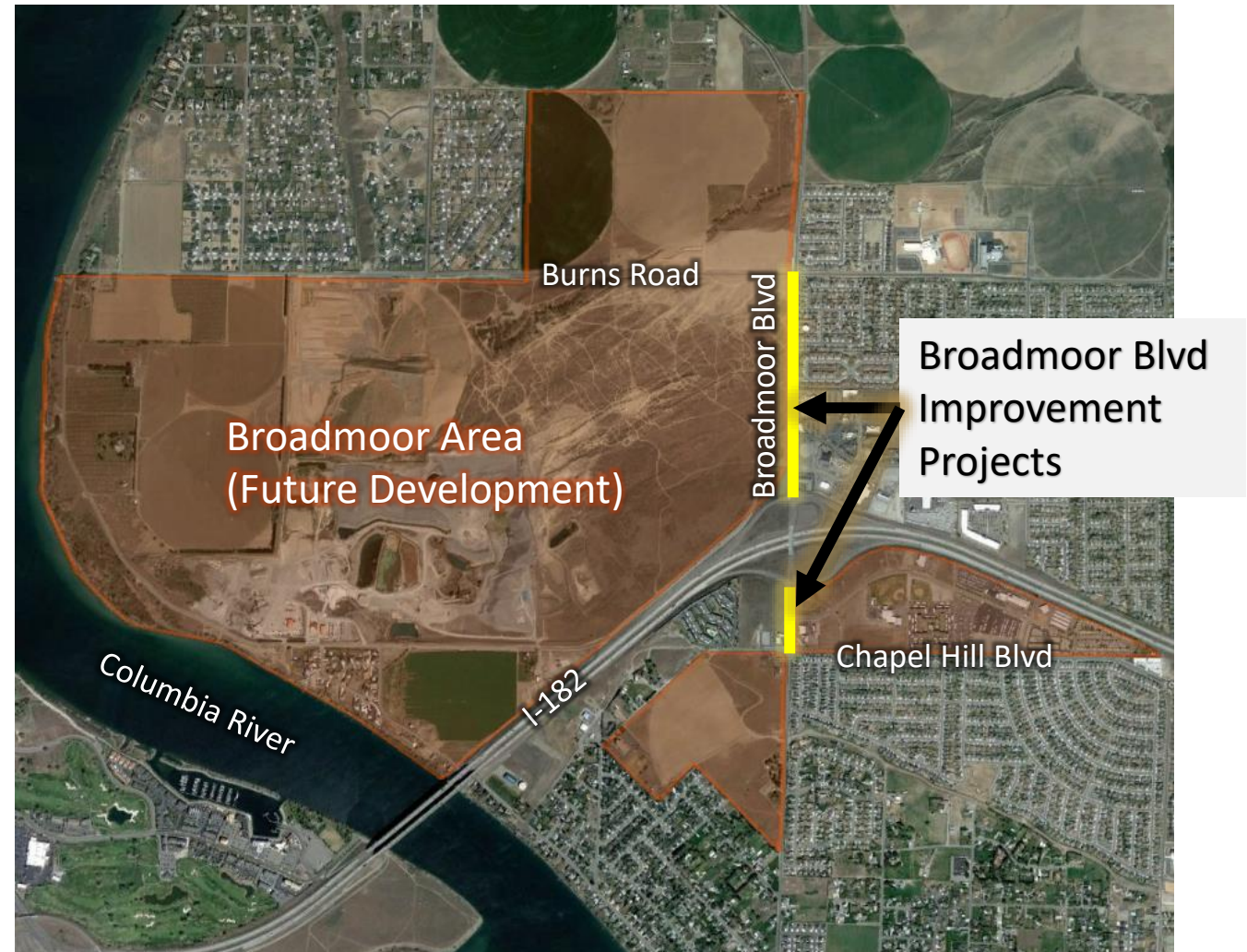
Project Background

- Pasco's Comprehensive Plan recently updated
- Broadmoor Area growing
- Residential & Commercial developments proposed
- 7,000 new housing units
- 3,000 new jobs



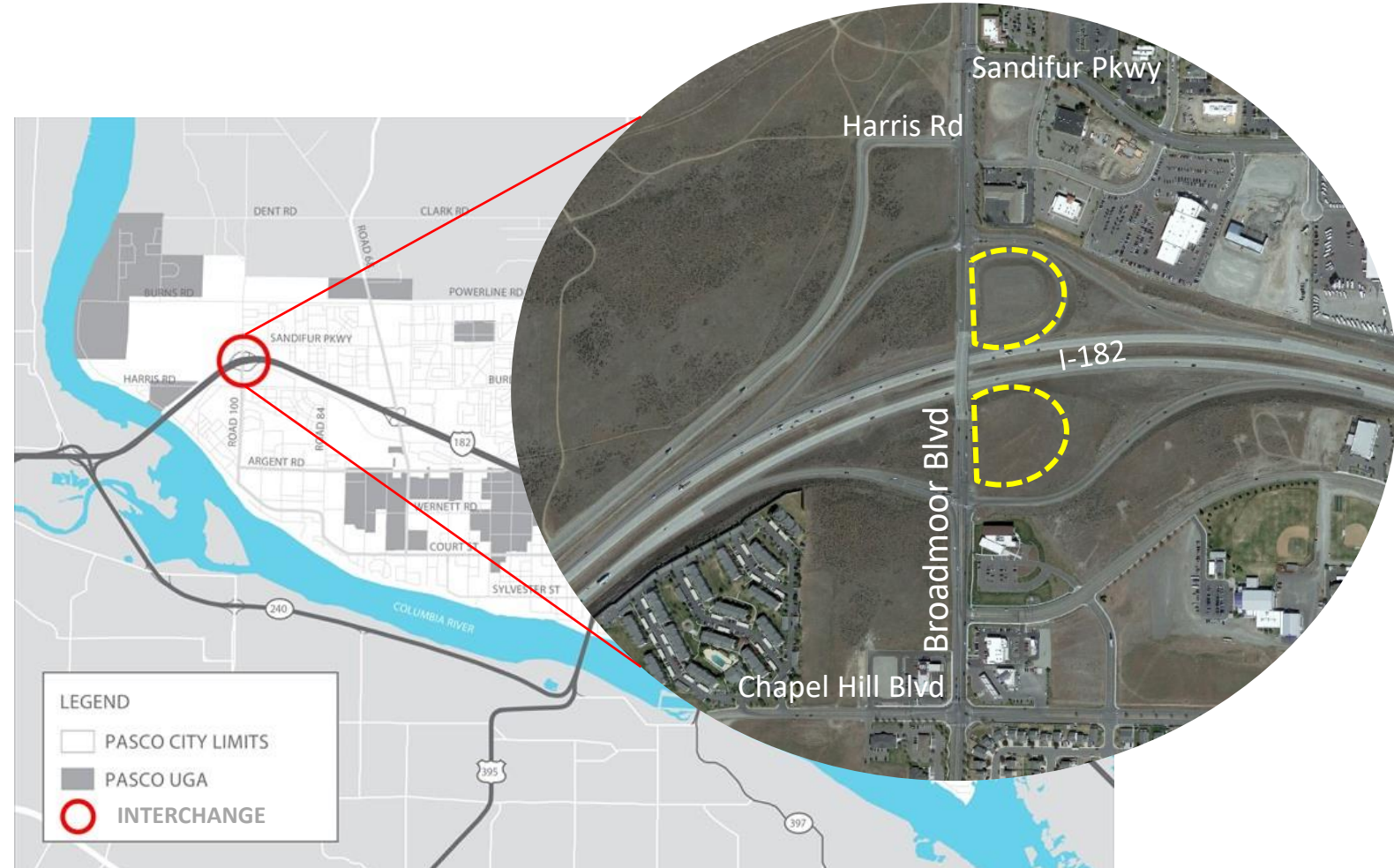
Project Background

- Pasco is currently refining proposed design improvements to Broadmoor Boulevard both north and south of the interchange.
- This interchange project fills in the Broadmoor Boulevard Corridor gap, addressing needs at the interchange.



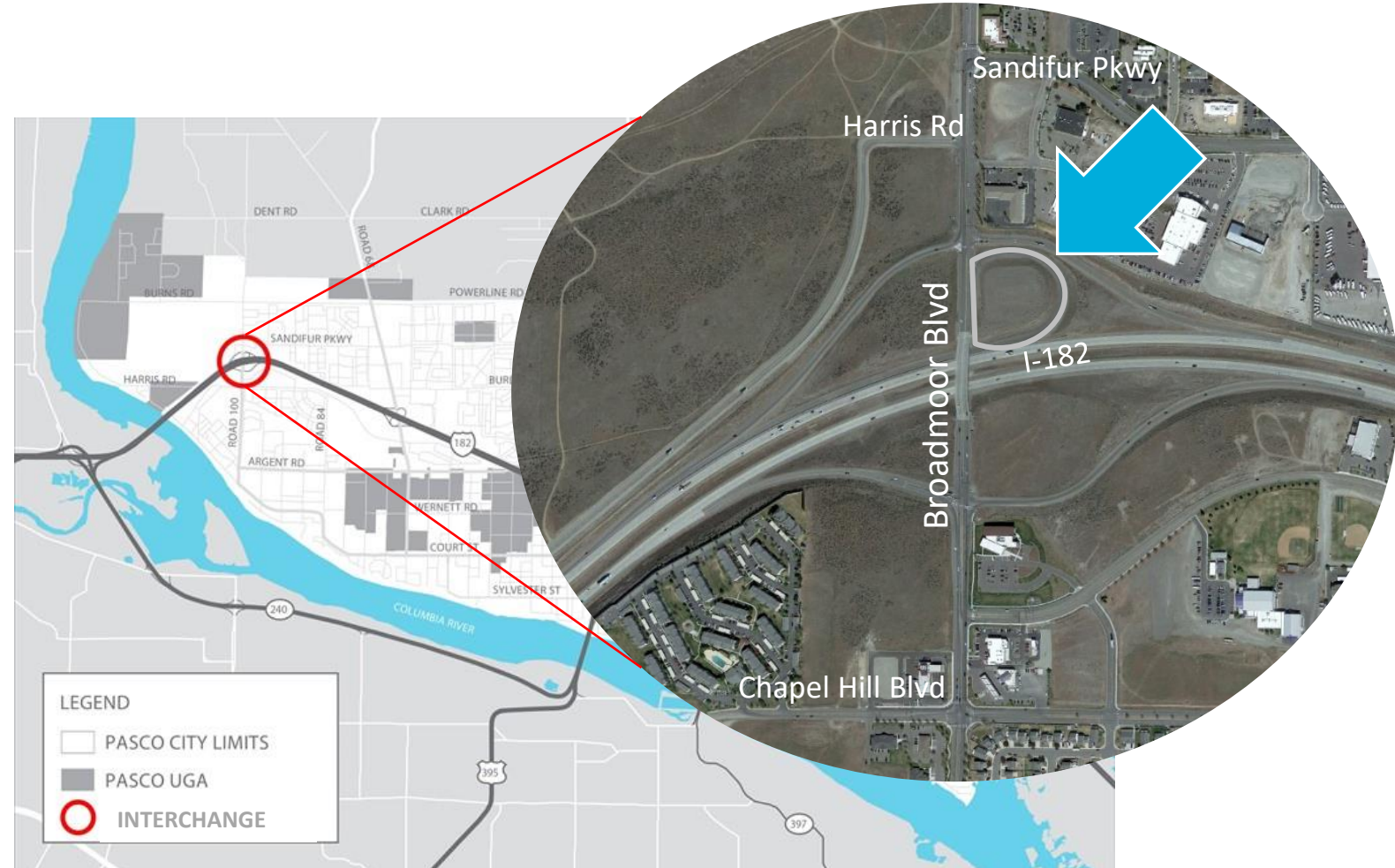
Broadmoor Interchange

- Constructed in early 1980s.
- Original design was meant to accommodate loop ramps in the northeast and southeast quadrants when needed to serve future traffic.



Broadmoor Interchange

- Northeast quadrant loop ramp was added in 2009 along with signals and channelization improvements at the ramp terminals.



Project Purpose & Need

- Reduce future congestion
- Improve safety
- Support active transportation
 - Bicycles & Pedestrians



Gaps and Needs: Operations



- Long queues on Eastbound Off- Ramp
- Level of Service F (Failure)
 - Eastbound Off-Ramp signal
 - Eastbound I-182 exit ramp

Gaps and Needs: Safety



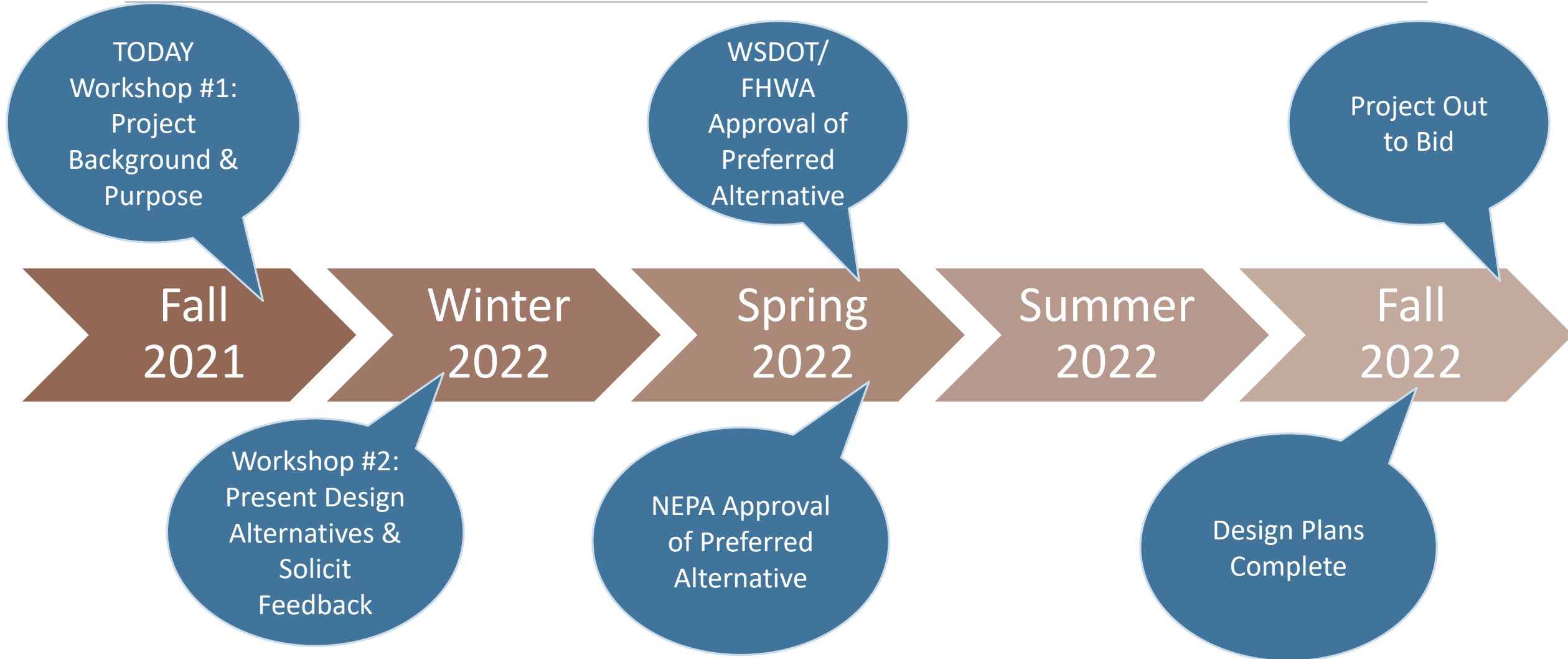
- High number of crashes near:
 - Eastbound I-182 exit ramp
 - Eastbound ramp terminal intersection
 - Westbound ramp terminal intersection
 - Along Broadmoor Blvd through the interchange

Gaps and Needs: Active Transportation



- Current north-south facilities through the interchange:
 - High stress by bicyclists and pedestrians
 - Do not effectively tie into the local system

Timeline



City of Pasco Social Pinpoint Online Comments

<https://dks.mysocialpinpoint.com/broadmoorproject#/>

Broadmoorproject
City of Pasco Broadmoor Interchange Project

Welcome to the City of Pasco Broadmoor Interchange Project Interactive Map!
To leave your feedback drag one of these icons at the top of the page to a point in the map to leave a comment, suggestion or concern.

Drag to comment > Safety Concern Something's Not Right Other Comment Traffic Congestion Concern Pedestrian Concern Bicycle Comment

You may also attach/upload images if you think it will help us better understand your perspective. You can find additional information about specific areas of the alignment by clicking the layer on the map. All comments will remain anonymous but all comments will be made public once the comment period for this phase of outreach closes.

If you would like to view this in another language, please activate Google Translate by clicking this icon in the top right corner of your screen.

Si desea ver esto en español (u otro idioma), utilice Google Translate haciendo clic en este icono en la esquina superior derecha de la pantalla.

Para dejar sus comentarios arrastre uno de estos iconos en la parte superior de la página a un punto del mapa para dejar un comentario, sugerencia o preocupación.

Arrastra para comentar > Preocupación por la seguridad Algo que me gusta Otro comentario Preocupación por la congestión de tráfico Preocupación por los peatones Comentario de bicicleta

También puede adjuntar/cargar imágenes si cree que nos ayudará a comprender mejor su perspectiva. Puede encontrar información adicional sobre áreas específicas de la alineación haciendo clic en la capa del mapa. Todos los comentarios permanecerán anónimos, pero todos los comentarios se harán públicos una vez que se cierre el período de comentarios para esta fase de divulgación.

Welcome!

Legend
 Comment Boundary



Drag to comment >



Safety Concern



Something I like



Other Comment



Traffic Congestion Concern



Pedestrian Concern



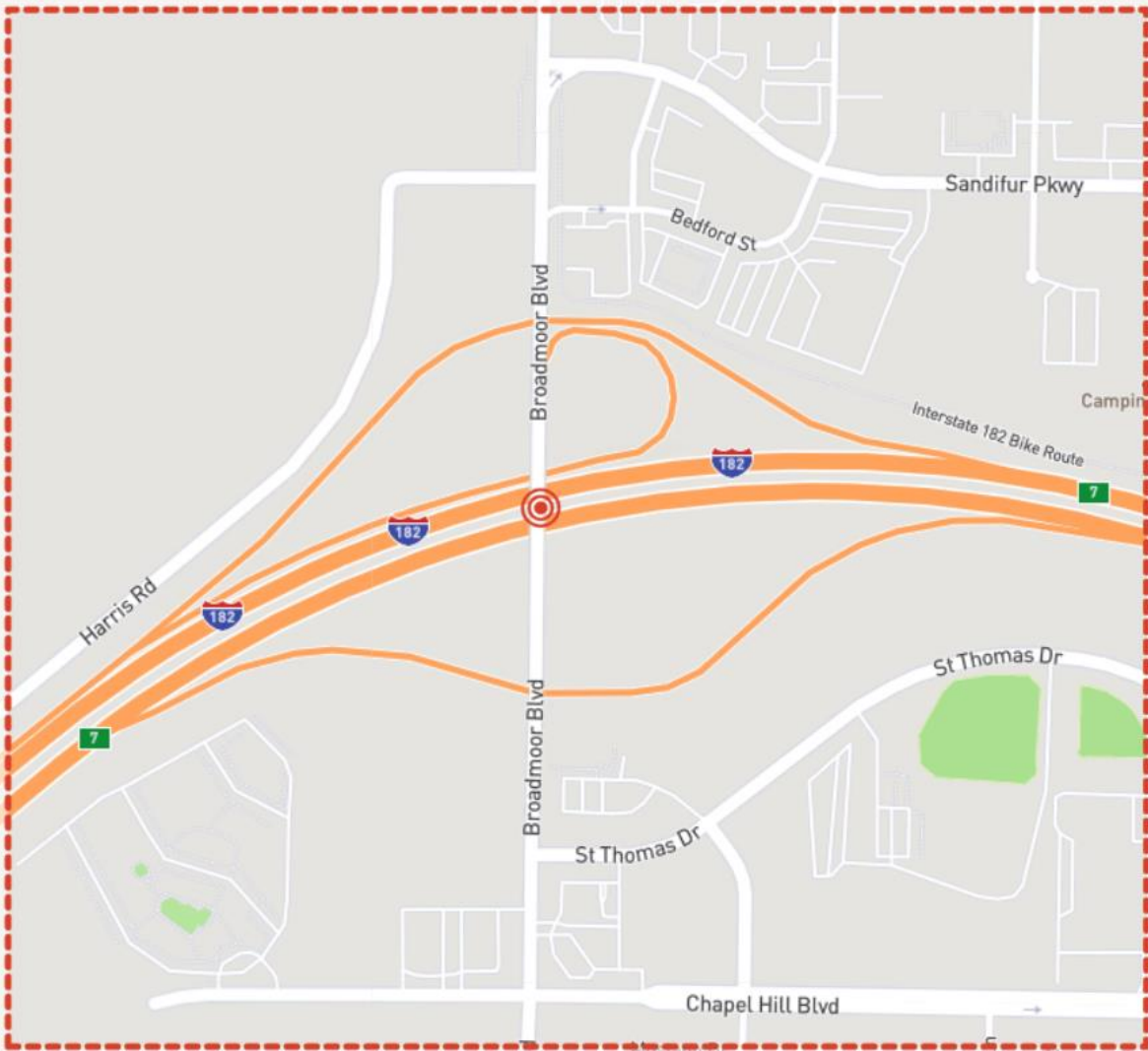
Bicycle Comment



Google Translate Function

ABOUT

CONTACT US



Legend

- Comment Boundary



Drag to comment >



Safety Concern



Something I like



Other Comment



Traffic Congestion Concern



Pedestrian Concern



Bicycle Comment



ABOUT

CONTACT US

Leave us your comment

Comment* (Required)

First name

Veronica

Last name

Last name

Phone

Phone Number

Zip code

Zip code

Attach an optional photo



Attach

Supports png, jpg/jpeg, gif and heic

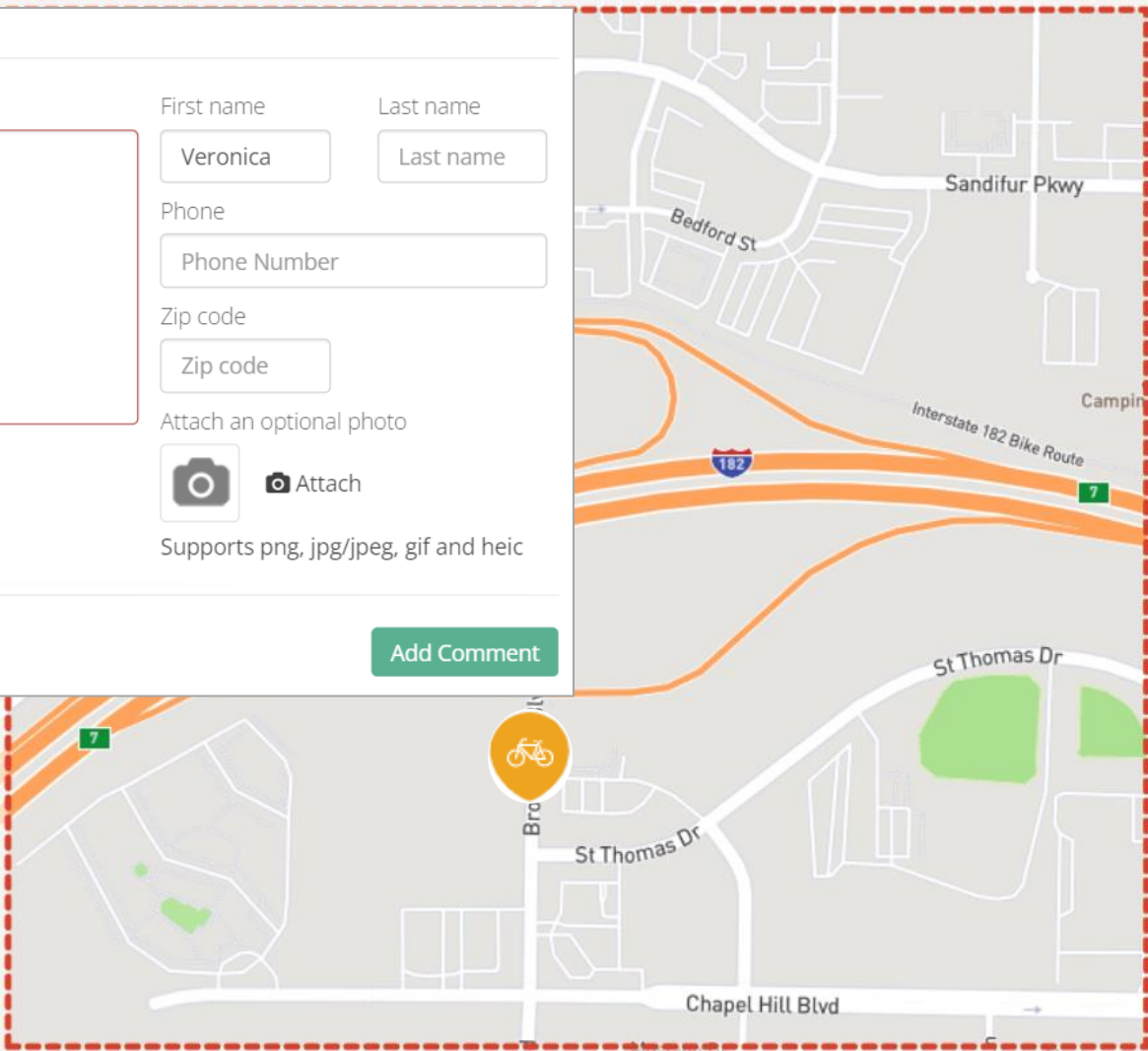
Leave your comment here

Your email * (Required)

veronica.sullivan@dksassociates

Add Comment

Google Translate Function



Legend

Comment Boundary



Questions & Comments

City of
Pasco



Contact Information

Public Outreach:

Veronica Sullivan

Email: veronica.sullivan@dksassociates.com

Project Manager:

Aaron Berger

Email: adb@dksassociates.com